

# Custom Two Story Colonial

With Two-Car Garage and Full Basement  
On 1/2 Acre Lot with Public Water & Sewer



**2,800 Square Feet of Living Space**  
**66 Pemberton Place, Freehold, NJ**

## **Loaded with Quality Features**

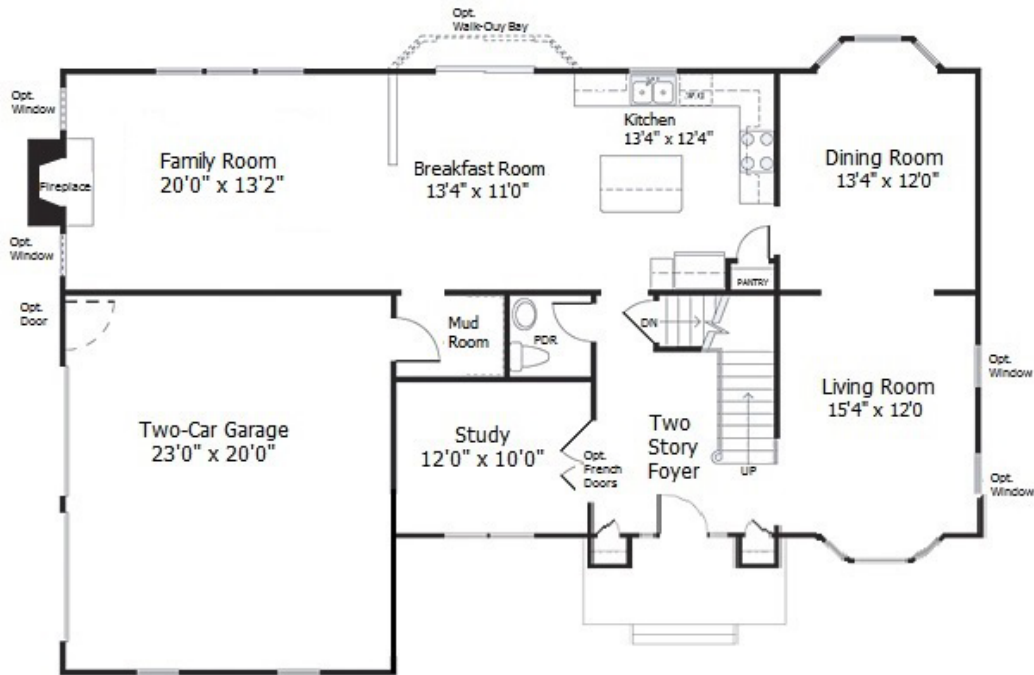
- Vinyl Siding (Shown Opt. Stucco and Stone Front)
- Nine Foot Ceilings On First Floor
- Full Basement With Nine Foot Walls and Full Insulation
- Grand Family Room With Gas Fireplace & Custom Window Wall
- Gourmet Island Kitchen With 42" Cabinets
- Stainless Steel Appliances
- Granite Kitchen Counter Tops
- Two Zone High Efficiency Heat and AC
- Ceramic Tile Baths With Kohler Fixtures
- Recessed Lighting
- Hardwood Floors and Carpeting On First Floor
- Hardwood Flooring Second Floor Hall
- Custom Wood Trim Package

***Attractively Priced At \$589,000***

*Brokers Welcome*

*Contact Ryan Voerg at 732-536-5400*





First Floor Plan



Second Floor Plan

# The Outstanding Premier Features of Your New Home

## SUNCREST BUILDERS

### COMMITMENT TO QUALITY:

A great deal of thought and care has gone into the design of each home and the selection of every amenity and finish for Suncrest Builders' homes, from the entrance to the many unseen features that can only be appreciated once you are a resident. Each detail contributes to the master plan; this plan is what we believe to be your vision of the ideal home. Turning your dream into reality is a responsibility Suncrest Builders takes very seriously. It is evident in the many high quality features incorporated into every home, street and community we build.

### Standard Features Outside Your Home:

- Minimum half acre homesites
- Architect dramatic elevations and designs
- Attached two-car side load garage
- Maintenance free vinyl siding – Choice of colors
- GAF asphalt 25 year dimensional roofing shingles
- Dental molding on front elevation
- Thermal insulated entry door with satin kick plate
- Asphalt driveway
- Brushed concrete front walk to driveway
- Frost free front and rear hose bibs
- Weatherproof front and rear electrical outlets
- Aluminum leaders and gutters

### Standard Features Inside Your Home:

- Nine foot high first floor ceiling
- Two story entry foyer
- ¾" Hardwood on first floor in foyer, kitchen, dining room
- Hardwood 2<sup>nd</sup> floor hall
- Ceramic tile flooring in all full baths
- Crown molding in living room, study, and foyer
- Chair rail in dining room
- Solid oak interior rails (main stair)
- Classique raised panel interior doors
- Dramatic volume or two story ceilings (where shown)
- Palladium and high glass windows (where shown)
- Formal living room
- Elegant dining room
- Spacious family room • Dinette
- Two and one-half baths
- Library or study (where shown)
- 36" Gas burning fireplace in family room
- Energy efficient vinyl windows with low-E glass
- Windows include screens, grills, wood jams and interior wood trim.
- Luxurious master suite with private retreat (where shown)
- Separate laundry room with washer and gas dryer hook-ups
- Designer vinyl flooring in laundry room (where shown)
- Wall to wall carpet in all bedrooms choice of colors
- Abundant closet space with vented shelving
- Linen Closets (where shown)
- Pre wire for cable TV and telephone
- Electric door chimes
- Recessed lights where shown

### Deluxe Kitchen Features:

- Deluxe birch wood cabinetry with 42" upper cabinets
- Granite counter tops with large single bowl under counter Stainless steel sink
- Kohler® single lever faucet with matching side spray
- GE® range
- GE® over the range microwave
- GE® multi-cycle dishwasher
- GE® batchfeed ¾ horsepower garbage disposal
- Ice maker line
- Pantry closet with ventilated shelving (where shown)

### Luxurious Bathroom Features:

- Elegant master bath with ceramic tile tub deck and Kohler® Soaking tub, separate glass-enclosed ceramic tile shower with shelf and his/her vanity sinks
- First floor powder room with pedestal sink and Kohler® 8" spread faucet and beveled oval mirror
- Deluxe birch wood cabinetry with cultured marble countertops and Kohler® single lever faucet
- Kohler® Sterling elongated toilets
- Full width custom vanity mirror with recessed medicine cabinets (where shown)

### Quality Construction Features:

- Poured concrete full basement • TJI silent flooring system
- PEX (Crosslink Polyethylene) water lines
- Copper wiring • 200 AMP service • Ground Fault interrupters (GFI)
- Carbon monoxide detector/smoke detector on each level and smoke detector in all bedrooms
- Sheetrock walls in garage
- Tyvek house wrap

### Energy and Conservation Features:

- 50 gallon gas fired energy efficient hot water heater
- Day-night programmable thermostat
- R-38 attic insulation • R-13 wall insulation
- 2 zone energy efficient heating and air conditioning
- High efficiency 90% gas heating
- High efficiency 13 SEER central air conditioning system

### Utilities:

- Municipal water and sewer • Underground utilities
- New Jersey Natural Gas • Jersey Central Power and Light

### Warranties:

- 2-10 Home Buyers Warranty

### Home Personalization:

See your sales representative for the many additional options and features available to customize your new home. Components and materials may be substituted for those of similar quality depending upon supply availability

66 Pemberton Place  
Freehold, NJ

